

# Spaces to hire



fulham\_pier

# Welcome



# to Fulham Pier

Fulham Pier is London's newest riverside destination, aiming to deliver exceptional experiences to be savoured by every visitor.

Whether you're planning a gala dinner, an offsite strategy meeting or festive celebration, Fulham Pier is the perfect venue to host and elevate your next event. With its riverside setting, it is an oasis of calm; a place where business meets tranquillity.

Discover endless possibilities for unique and bespoke experiences across our floors. From an intimate live events space in the basement to a vibrant food market of independent brands, and a fully flexible conferencing and events floor; the options for creating memorable moments are endless.

Our dedicated events team is here to surprise and delight, bringing creativity and expertise to every occasion. We don't just host events; we craft experiences that will stay with you and your guests for years to come.

As the latest addition to London's vibrant event scene, Fulham Pier is positioned to become the heart of community celebrations, corporate gatherings, and everything in between.







	Fulham Pier Hotel	Riverside Market	Lighthouse Social Members Club <small>Not for hire</small>	Orange Box	Water's Edge Thames Bar Brasserie Constance	Markers presented by FIS	Spa <small>Coming soon</small>
	All levels	Level 0 and riverside walkway	Levels 03, 04 & 05	Level -01	Level 01	Level 02	All levels



**Contents**

A space for everyone	08
Our spaces	10
Equipped for success	42
Dining, designed around you	44
Expect the unexpected	46
Personalised stadium tours	48
Easy connections	50

London's  
premium  
destination

# newest riverside









# A space for everyone



We believe each event is unique and deserves a personalised touch. Our expert team works closely with you to tailor every detail, from bespoke theming to those all-important finishing touches bringing your event to life exactly as you imagined it. Fulham Pier is 100% DDA (Disability Discrimination Act) compliant, we are an open and inclusive venue to all, and our dedicated teams work to ensure this on a daily basis.

# A space for everyone

	Theatre	Cabaret	Dinner	Reception	Meetings (Rounds)	Boardroom	U-shape
<b>Orange Box</b>	230	100	180	500	184	–	–
<b>Thames Bar</b>	–	–	–	100	150*	–	–
<b>Water's Edge</b>	–	–	100	40	10	10	–
<b>Markers 1, presented by FIS</b>	250	80	220	450	220	–	–
<b>Markers 2 &amp; 4, presented by FIS</b>	–	20	–	100	50	14	22
<b>Markers 3, presented by FIS</b>	–	25	–	110	70	26	22

\*We are unable to offer rounds in Thames Bar





# Orange Box









# Orange Box



## Capacities

Theatre 230

Cabaret 100

Dinner 180

Reception/standing 500

Meetings (rounds) 184

## Key features

Self-sufficient, dedicated reception and cloakrooms

Two bars

Pull-out stage

Retractable theatre-style seating

Screens

State-of-the-art video wall

## Perfect for

Panel talks

Drinks receptions

Parties

Networking events

Exhibitions

Keynote presentations

Team-building events

Filming and product launches

# Orange Box

State-of-the-art live events venue

**A** Central Stairs

**B** Entrance

**C** Cloakroom

**D** Screens

**E** Retractable Stage

**F** Retractable Seats

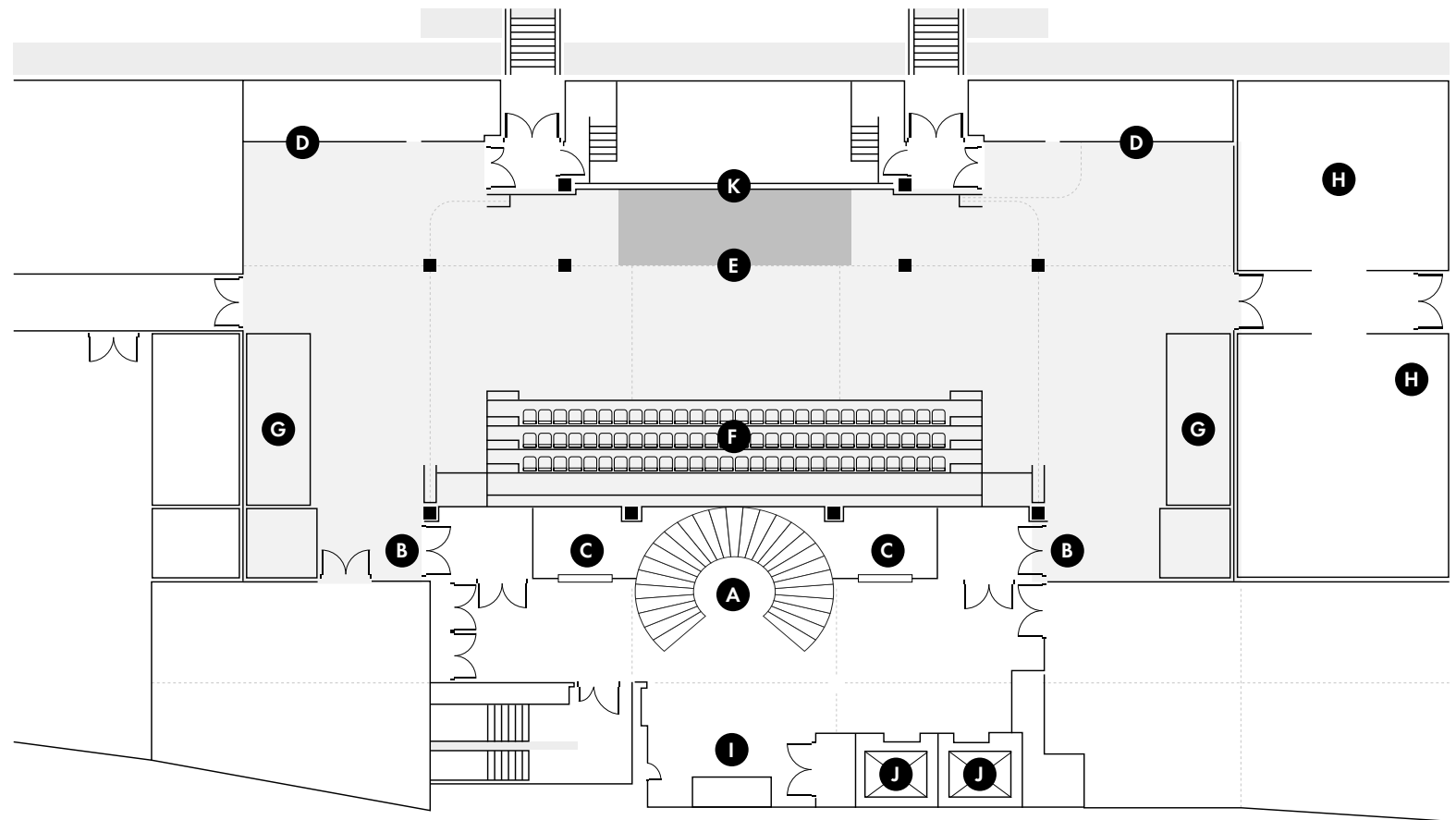
**G** Bar

**H** Wash Room

**I** Reception

**J** Lifts

**K** Video Wall





ORANGE BOX

420m<sup>2</sup>



# Thames Bar











# Thames Bar



## Capacities

Reception

100

Meetings

150

## Key features

Beautifully styled dedicated bar

Mixed seating

Intimate informal space

## Perfect for

Drinks receptions

After-dinner drinks

Product launches

Networking events

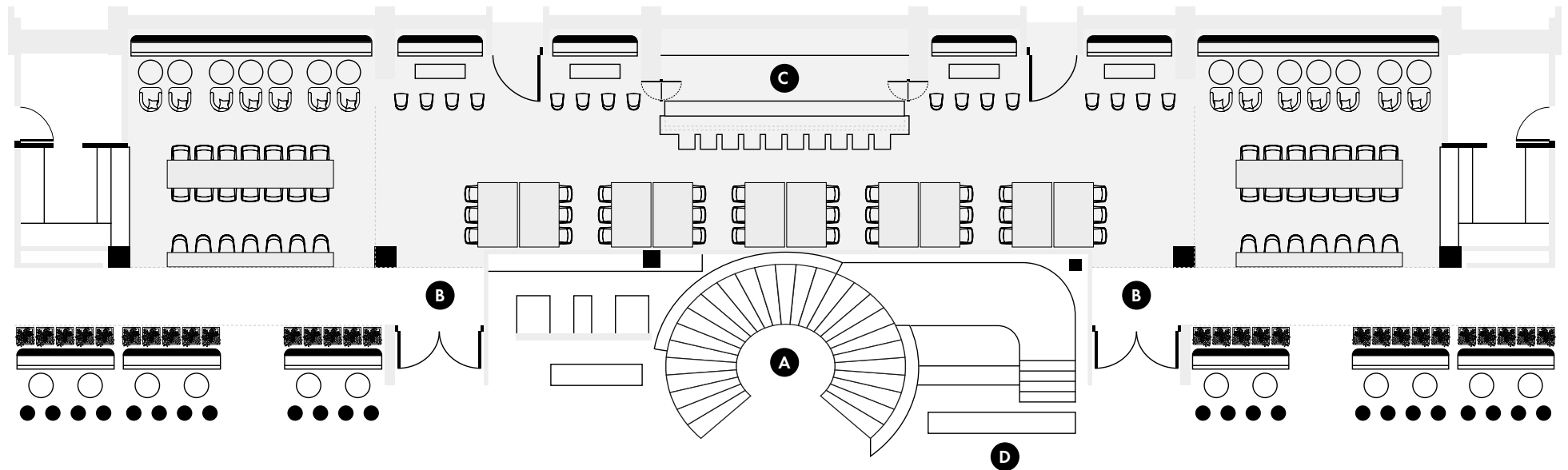
Programming

Smaller Christmas parties

Team-building events

# Thames Bar

A beautifully-styled standalone venue



- A** Central Stairs
- B** Entrance
- C** Bar
- D** Reception



190m<sup>2</sup>



# Water's Edge











# Water's Edge



## Capacities

Dinner (if only using the restaurant space)

100

Reception

40

Private Dining Room-  
can also be used for  
meetings and as a  
boardroom

10

## Key features

Private terrace

Dedicated staff

Tailor-made dining  
experiences

## Perfect for

Product launches

Team lunches and dinners

Networking dinners

Intimate private dinners

Private events

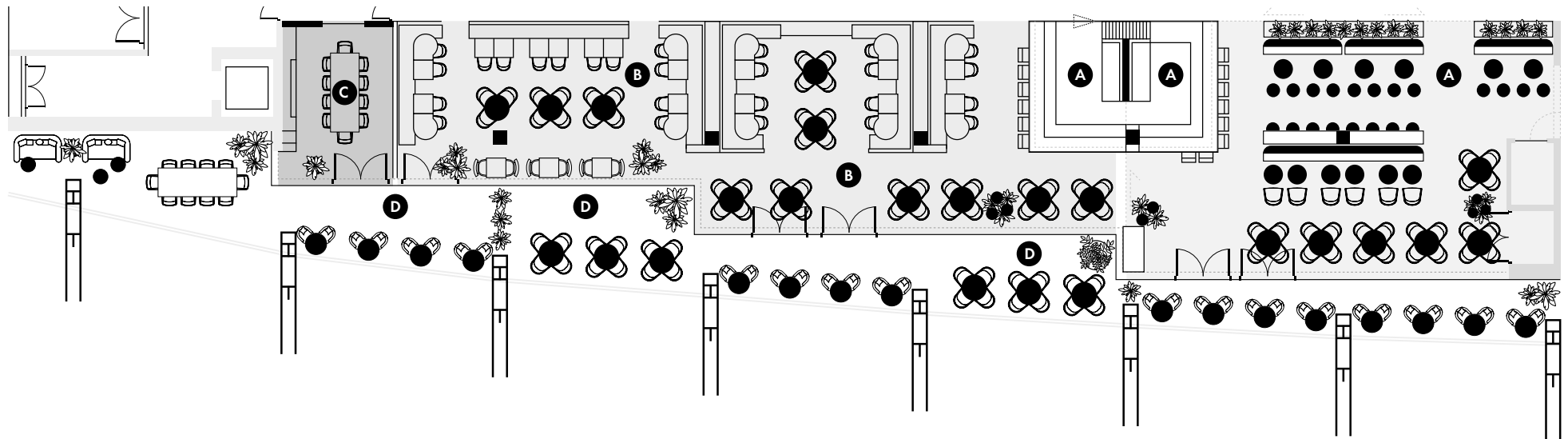
Christmas parties



# Water's Edge

Culinary refinement in a dedicated dining space

---



- A** Bar
- B** Restaurant
- C** Private Dining Room
- D** The Terrace





170m<sup>2</sup>



# Markers 1

Presented by FIS



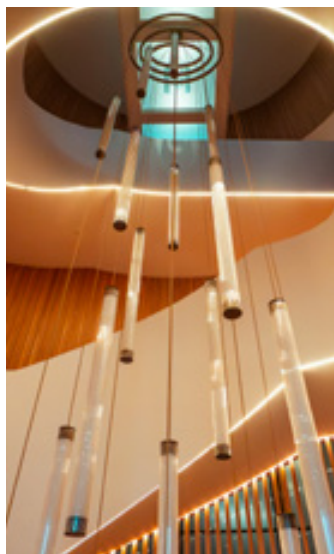








# Markers 1, presented by FLS



## Capacities

Theatre

250

Cabaret

80

Dinner

220

Reception

450

Meetings (rounds)

220

## Key features

Flexible spaces

Flexible seating options

Multiple screens

Dedicated bar

Uninterrupted views of the Thames

Ability to blackout space

## Perfect for

Meetings

Conferences

Small trade shows

Exhibitions

Networking events

Receptions

Private celebrations

Christmas parties

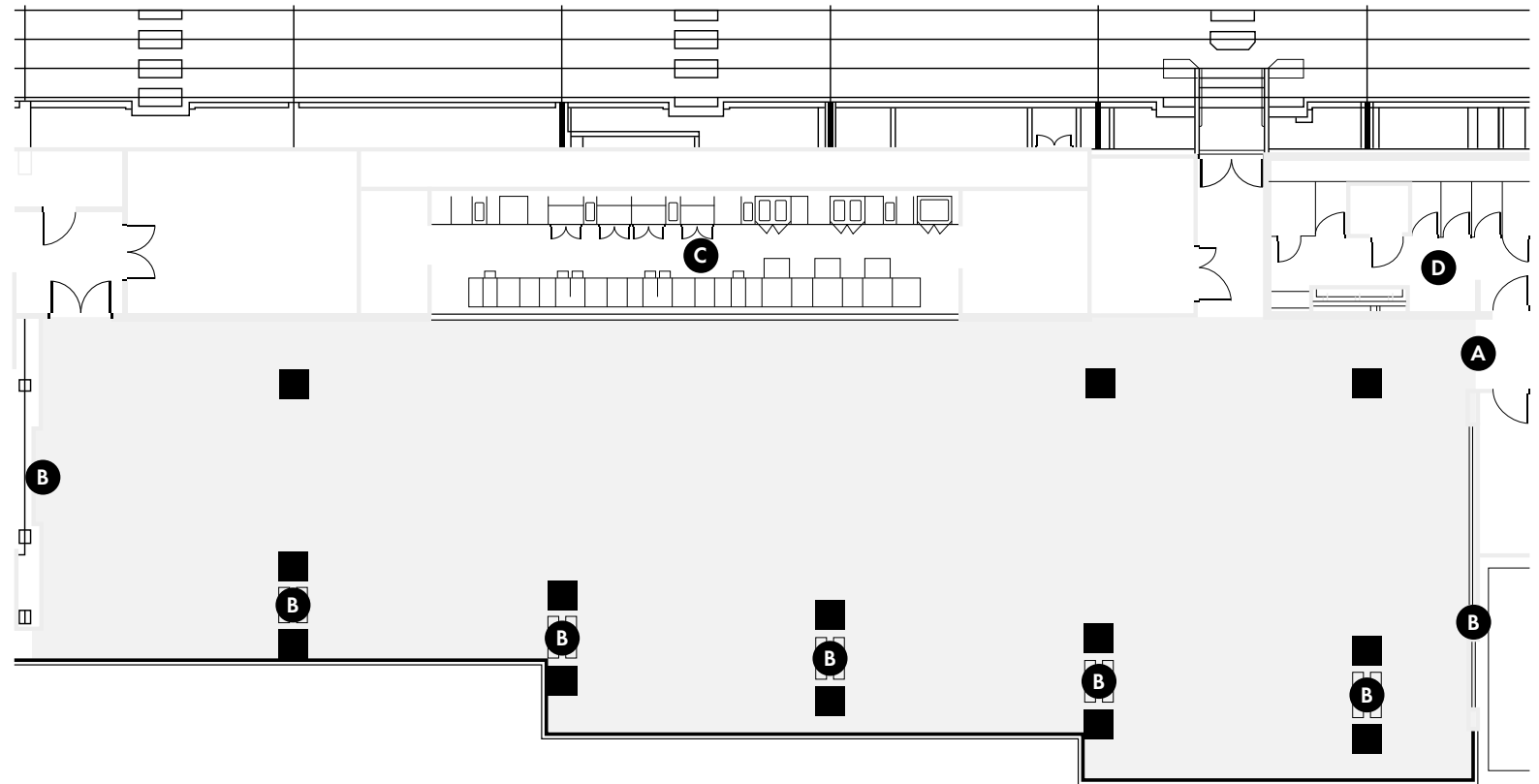
Product launches

Gala dinners

# Markers 1, presented by FLS

A bespoke conferencing and events space

- A** Entrance
- B** Screens
- C** Bar
- D** Wash Room



TEAM IS ALL I

430m<sup>2</sup>



# Markers 2, 3 & 4

Presented by FIS











# Markers 2, 3 & 4, presented by FIS

Can be used as a singular space, or partitioned into three separate spaces.



## Capacities, 2 & 4

Cabaret	20
Reception	100
Meetings (rounds)	50
Boardroom	14
U Shape	22

## Key features

Intimate settings

Flexible seating options

Multiple screens

Uninterrupted views of the Thames

## Perfect for

Small meetings

Office for the day

Small receptions

Exhibitions

Training

Team workshops

Break out rooms

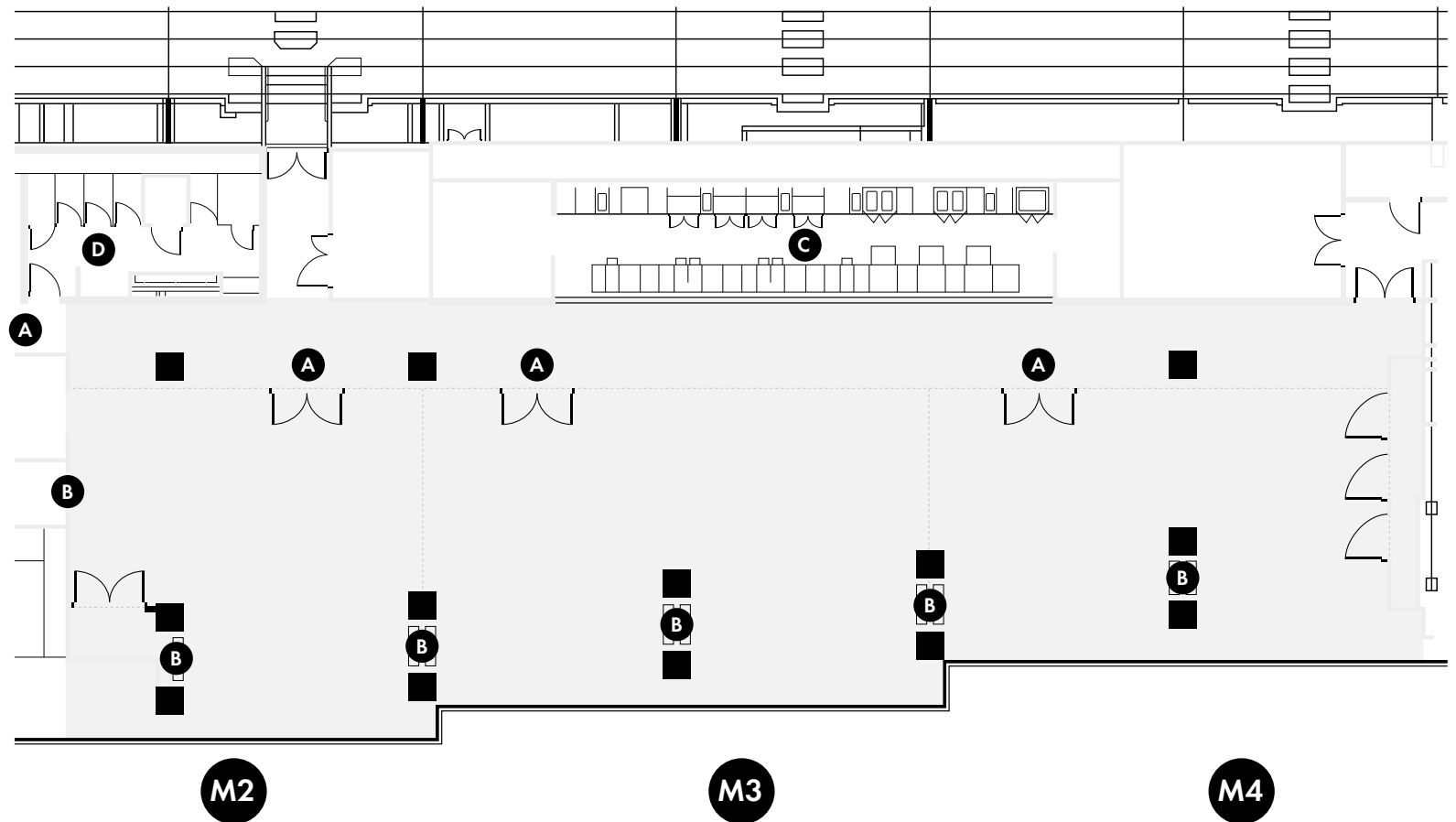
## Capacities, 3

Cabaret	25
Reception	110
Meetings (rounds)	70
Boardroom	26
U Shape	22

# Markers 2, 3 & 4, presented by FIS

A bespoke conferencing and events space

- A** Entrance
- B** Screens
- C** Bar
- D** Wash Room
- M2** Markers 2, 3 & 4 has a set of movable dividers. The space can operate as a single space, two different spaces or it can accommodate three smaller events.
- M3**
- M4**





430m<sup>2</sup>









# Equipped for success

Fulham Pier is furnished with cutting-edge audiovisual equipment and modern amenities that ensure your event runs smoothly. Our high-tech solutions are designed to support any specific needs, from presentations to live entertainment.

Every space has access to multiple digital screens, which can all be remotely connected to. There is high-speed, secure Wi-Fi throughout the venue ensuring you remain connected for the duration of your event.

Whilst we believe we have everything you need to stay connected when you are with us, if you have any specific requests, we are more than happy to discuss these with you.



# Dining, designed around you



Savour every moment with a menu tailored to your event. From light breakfasts to indulgent banquets, our chefs craft exceptional dining experiences that elevate every occasion. We'll curate the perfect food and beverage offering reflecting your needs. This could be:

- Grazing tables
- Five-course à la carte gala dinners
- Intimate dining experiences
- Breakfasts from our brand partners
- Grab-and-go lunches
- Sunset cocktail receptions

Take a look at our Food Moments brochure for more sample dishes to whet your appetite.





# Expect the unexpected

At Fulham Pier we don't just meet expectations we exceed them. Our commitment to impeccable service and unforgettable hospitality ensures your event isn't just successful, but truly memorable.

From riverside yoga to cocktail masterclasses with our in-house mixologist we offer a range of unique experiences designed to set your event apart.

With a dedicated programming team and round the clock support, we're here to make sure everything runs seamlessly. We can help add in those details that leave your guests delighted ensuring your event is remembered long after the day ends.

## **Pier Pal**

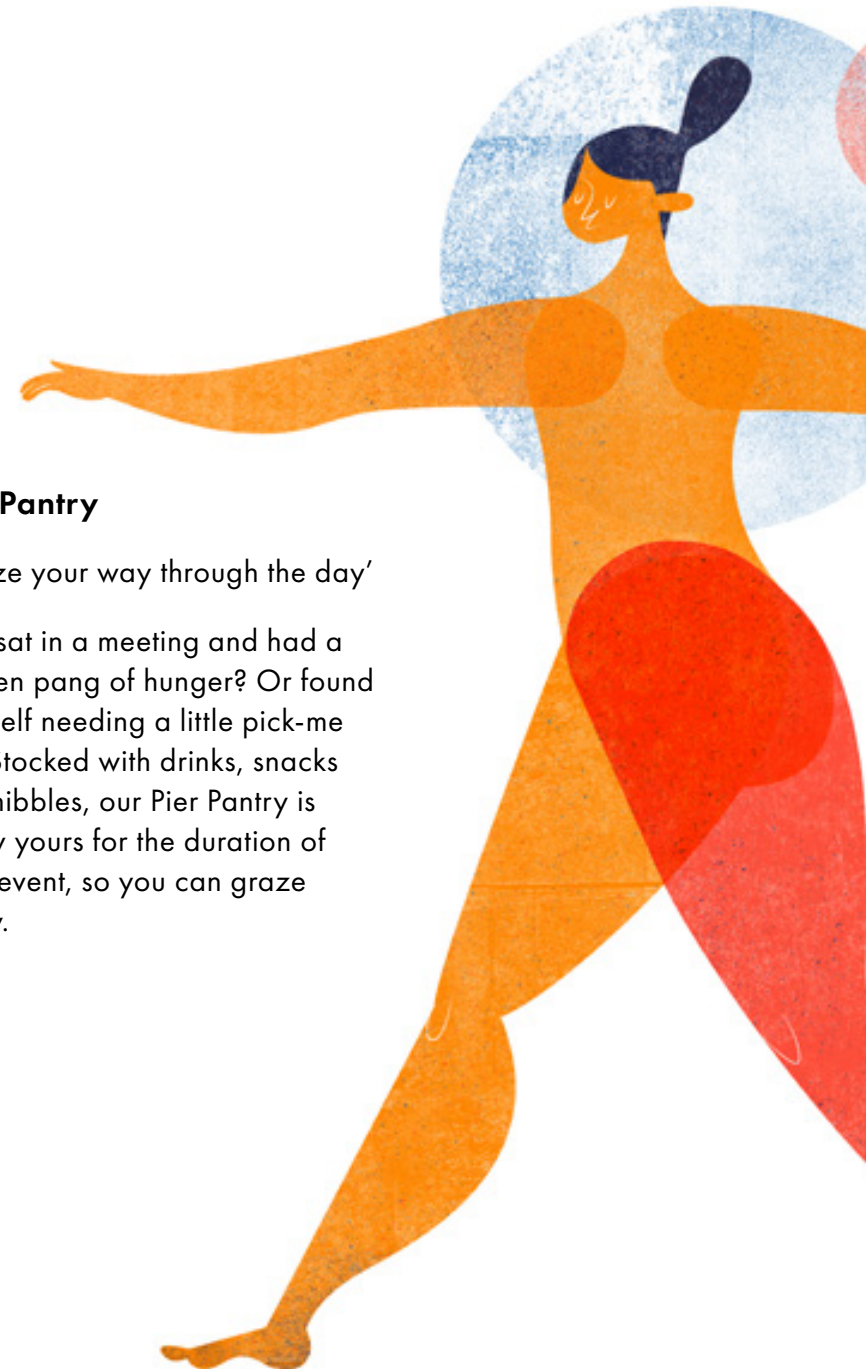
'Last minute surprises belong in presentations, not your event planning'

We know what it's like to suddenly realise you've forgotten something. The Pier Pal is a boardroom box stocked with everything from a multi-charger cable to a slide clicker to pens and notepads. So, if you find yourself missing something last minute, simply request a Pier Pal and we'll have it sorted in no time.

## **Pier Pantry**

'Graze your way through the day'

Ever sat in a meeting and had a sudden pang of hunger? Or found yourself needing a little pick-me up? Stocked with drinks, snacks and nibbles, our Pier Pantry is solely yours for the duration of your event, so you can graze away.





## Waterside wellness

'Take a moment to reflect and relax'

Our wellness experts are on hand to deliver moments of relaxation, whether that be guided breath work to start your meeting, a sound bath to end the day, or a post-lunch chair massage. Thoughtfully designed to restore balance and energy our wellness experiences ensure you leave feeling refreshed, recharged, and ready for what's next.





# Personalised stadium tours

Our personalised stadium tours which are named as one of the top 20 things to do in London by Trip Advisor are the perfect way to explore our unique surroundings and discover the history of Craven Cottage. Delivered by one of our fantastic tour guides, they're a memorable addition that adds an extra touch of excitement to any event.

Stadium tours are subject to availability please enquire with the team before requesting.

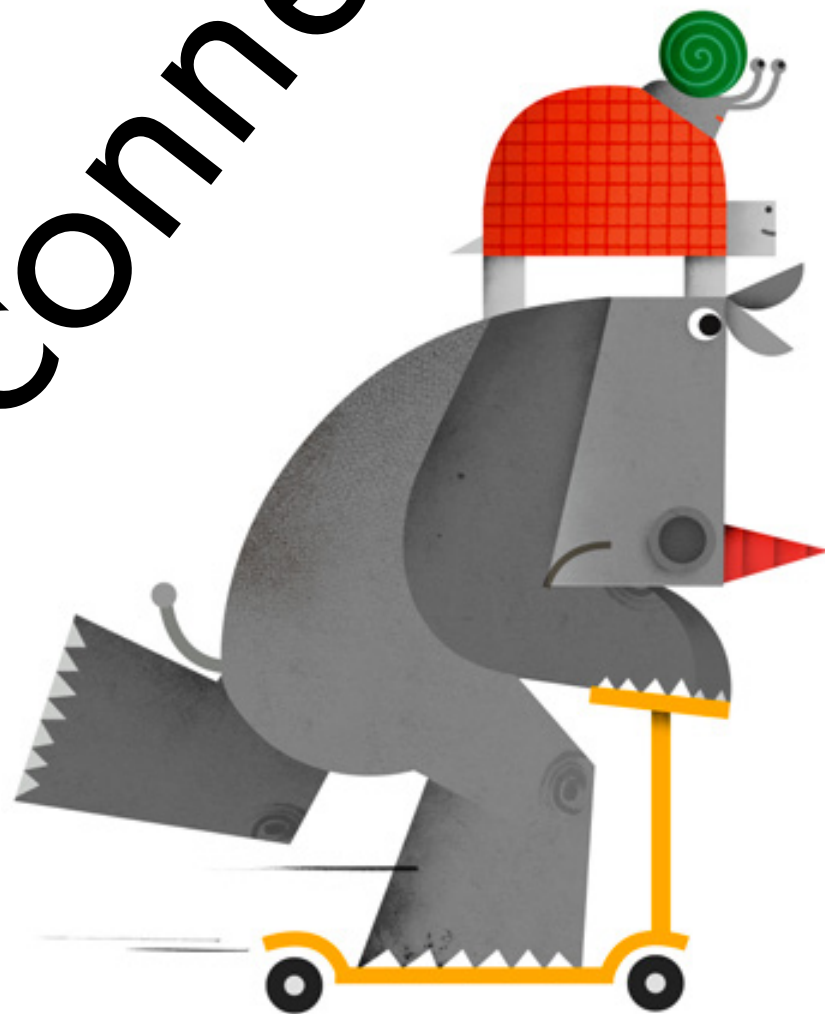








# Easy connections



Situated in the heart of South West London, Fulham Pier offers a tranquil retreat just moments away from Central London. Accessible by tube, rail, bike, bus or even boat making it a convenient destination for guests from the capital and beyond. Plus, for the first time in recent history, the new riverside promenade will complete the Thames Path between Putney Bridge and Hammersmith Bridge.

The nearest underground stations, Putney Bridge and Hammersmith, are less than 15 minutes away and directly connected to three major London railway stations without needing to change. We are more than happy to support if you have any specific transport needs just let us know and we'll do what we can to ensure a smooth arrival.





# Where exceptional events begin...

Reach out to our events team  
and let's start creating an  
experience your guest will talk  
about for years to come.

[Spacestohire@fulhampier.com](mailto:Spacestohire@fulhampier.com)

Social

