

# WELL-CONNECTED EVENTS





# LET'S CONNECT...

Welcome to ACC Liverpool, part of the Liverpool event campus – an interconnected arena, convention and exhibition centre – beautifully positioned on the banks of Liverpool's world heritage waterfront.

As a strong venue team, we are passionate about conferences, exhibitions and the industry we're part of. And with more than 13 years' experience in event delivery (notching up brilliant reviews along the way), we have matured into one of the most well-connected conference destinations in the UK.

Your Liverpool support network goes way beyond our own venue team, linking right into the heart of a world-class city and directly into an exceptional matrix of destination services.

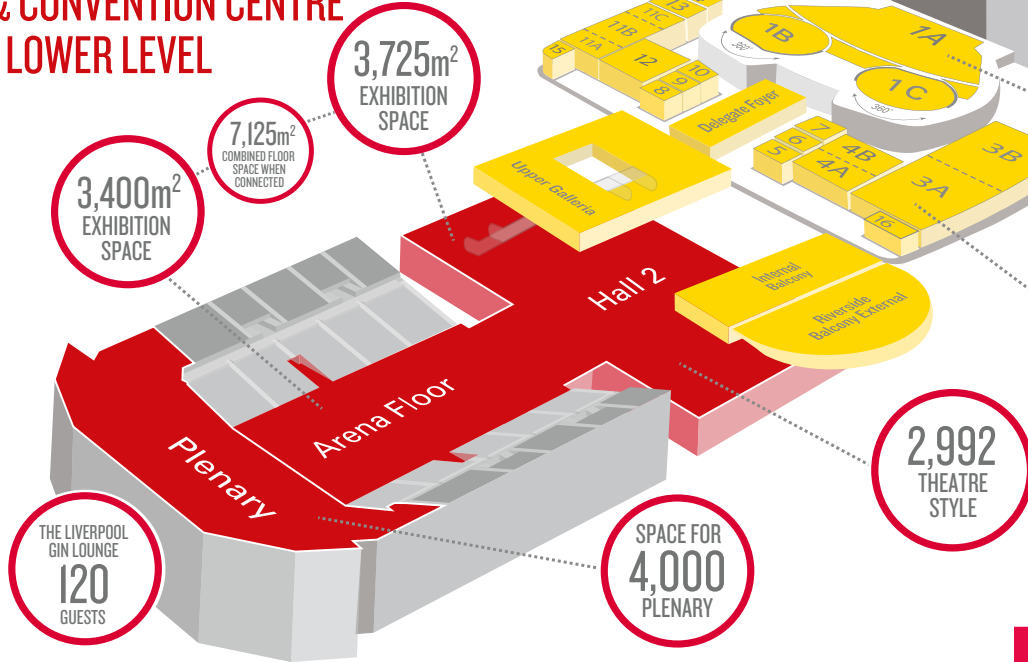
This is your whistle stop guide to our venue, giving you an overview of the essential information you need to plan your event. But if you really want to get a taste of what we have to offer then we'd love you to come visit.



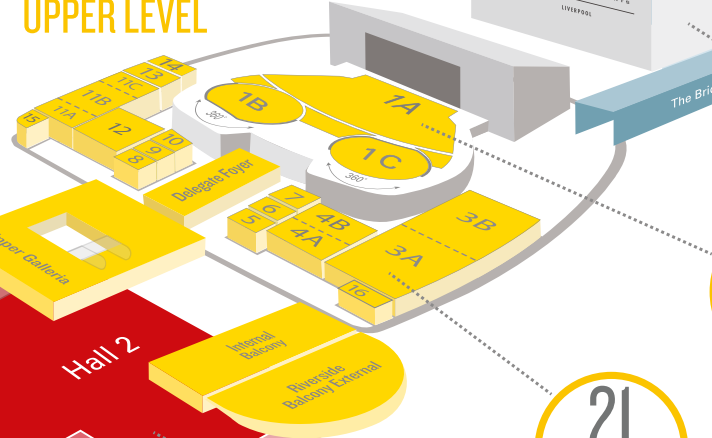
# CONNECTED CAMPUS

The Liverpool event campus features a trio of inter-connected purpose built venues and on-site hotels

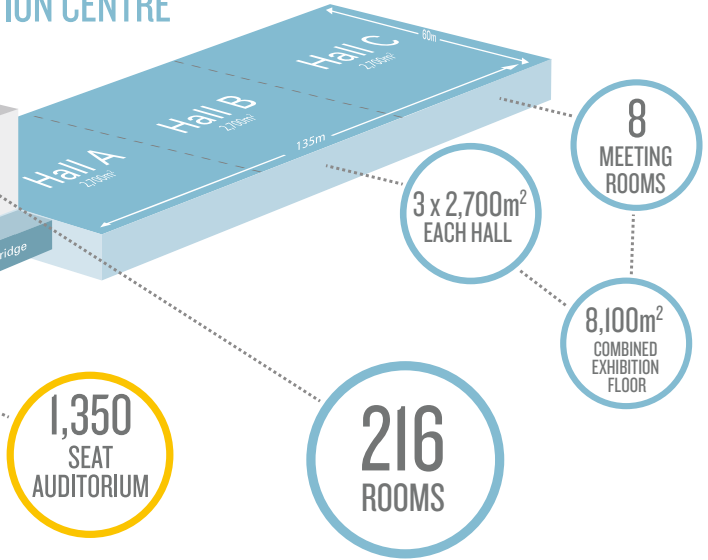
## ARENA & CONVENTION CENTRE LOWER LEVEL



## CONVENTION CENTRE UPPER LEVEL



## EXHIBITION CENTRE



## HOTEL ROOMS

658 ON SITE

7,632 CITY CENTRE

11,228 CITY REGION

## CITY CENTRE LOCATION

5-MINUTE WALK FROM THE ROYAL ALBERT DOCK  
HOME TO TATE LIVERPOOL AND THE BEATLES STORY

10-MINUTE WALK TO LIVERPOOL ONE AND THE CITY'S RETAIL CENTRE

**3** LIVERPOOL VOTED 3RD BEST DESTINATION TO VISIT (TRIP ADVISOR 2019)

## CLOSER THAN YOU THINK

2 HOURS 13 MINUTES FROM LONDON

90 MINUTES FROM BIRMINGHAM

45 MINUTES FROM MANCHESTER

1450 PARKING SPACES ON-SITE

MAJOR MOTORWAY LINKS VIA THE M62, M6, M58, M57, M56 AND M53

X2 INTERNATIONAL AIRPORTS

PORT OF LIVERPOOL ROUTES FROM ISLE OF MAN, DUBLIN AND BELFAST

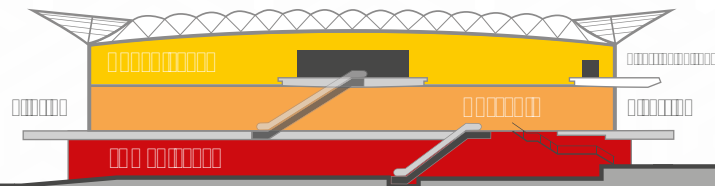
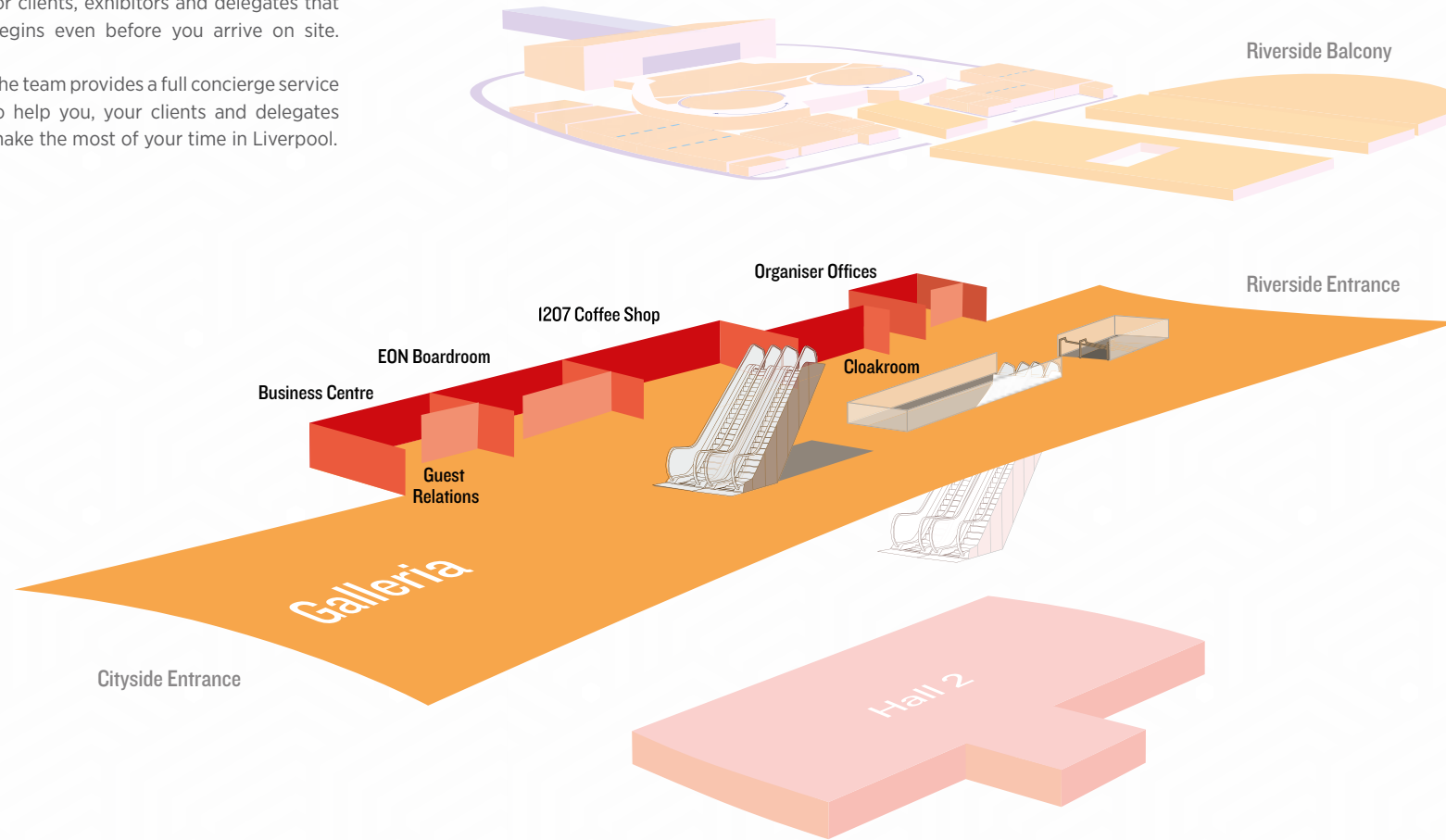
# GALLERIA

ACC Liverpool's galleria is a flexible space with organiser offices and a boardroom facility - features that keep you at the very heart of your event. Flooded by natural daylight, the area provides a beautiful backdrop for delegate registration or for a drinks reception.

The Galleria is also home to our much loved 1207 coffee bar, serviced by our caterers Sodexo Live!, and inspired by the year Liverpool burst into life.

ACC Liverpool's Guest Relations team is based in the Galleria and they are always on hand to provide a one-stop service for clients, exhibitors and delegates that begins even before you arrive on site.

The team provides a full concierge service to help you, your clients and delegates make the most of your time in Liverpool.



Galleria



Drinks Reception



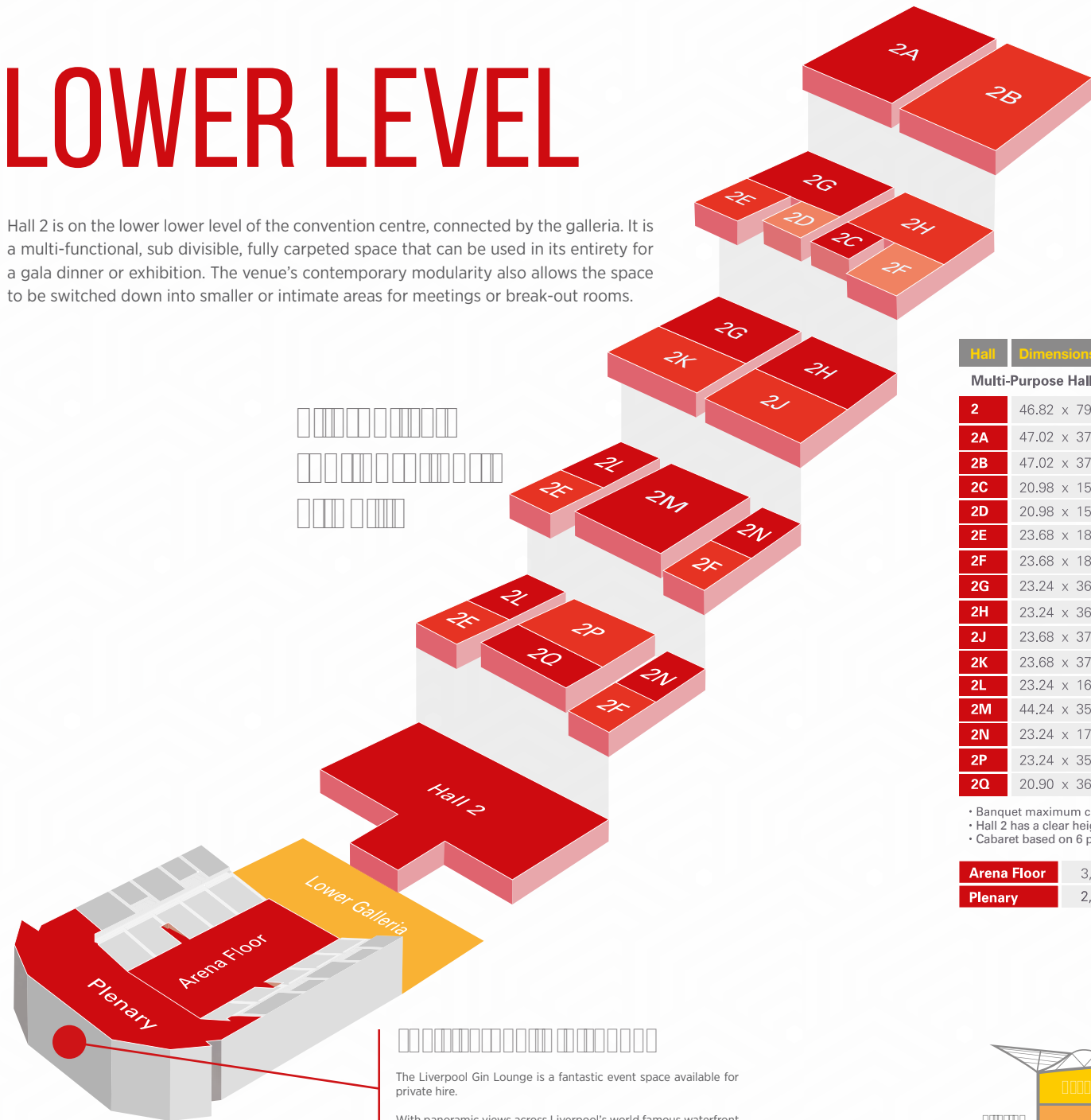
1207 Coffee Bar



□□□□□□□□□□□□□□□□□□□□  
 □□□□□□□□□□□□□□□□□□□□

# LOWER LEVEL

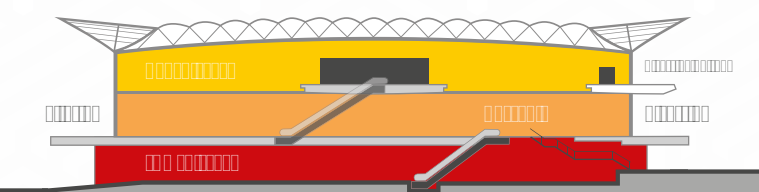
Hall 2 is on the lower lower level of the convention centre, connected by the galleria. It is a multi-functional, sub divisible, fully carpeted space that can be used in its entirety for a gala dinner or exhibition. The venue's contemporary modularity also allows the space to be switched down into smaller or intimate areas for meetings or break-out rooms.



□□□□□□□□□□□□□□□□□□□□  
 □□□□□□□□□□□□□□□□□□□□  
 □□□□□□□□□□□□□□□□□□□□

Hall	Dimensions (m)	Size (m <sup>2</sup> )	Theatre Style	Banquet	Cabaret	Classroom
<b>Multi-Purpose Hall (divisible)</b>						
2	46.82 x 79.12	3,725	2,992	1,800	1,260	1,580
2A	47.02 x 37.58	1,744	1,700	800	600	780
2B	47.02 x 37.54	1,744	1,700	800	600	780
2C	20.98 x 15.83	331	400	160	108	170
2D	20.98 x 15.82	332	400	160	108	170
2E	23.68 x 18.12	430	400	200	126	195
2F	23.68 x 18.17	429	400	200	126	195
2G	23.24 x 36.37	848	850	400	300	390
2H	23.24 x 36.56	848	850	400	300	390
2J	23.68 x 37.75	893	850	400	300	390
2K	23.68 x 37.74	893	850	400	300	390
2L	23.24 x 16.94	395	400	200	126	195
2M	44.24 x 35.62	1,576	1,700	800	600	780
2N	23.24 x 17.00	394	400	200	126	195
2P	23.24 x 35.62	893	850	400	300	390
2Q	20.90 x 36.62	893	850	400	300	390
<b>Arena Floor</b>	3,400m <sup>2</sup>					
<b>Plenary</b>	2,000 - 10,600 seats					

• Banquet maximum capacity above is without dance floor or serving kitchen  
 • Hall 2 has a clear height of 6.5m (8.4m within roof trusses)  
 • Cabaret based on 6 per table. Alternative configurations are available upon request.



Arena Plenary



Hall 2 Banquet



Exhibition Arena Floor



□□□□□□□□□□□□□□□□□□□□

The Liverpool Gin Lounge is a fantastic event space available for private hire.

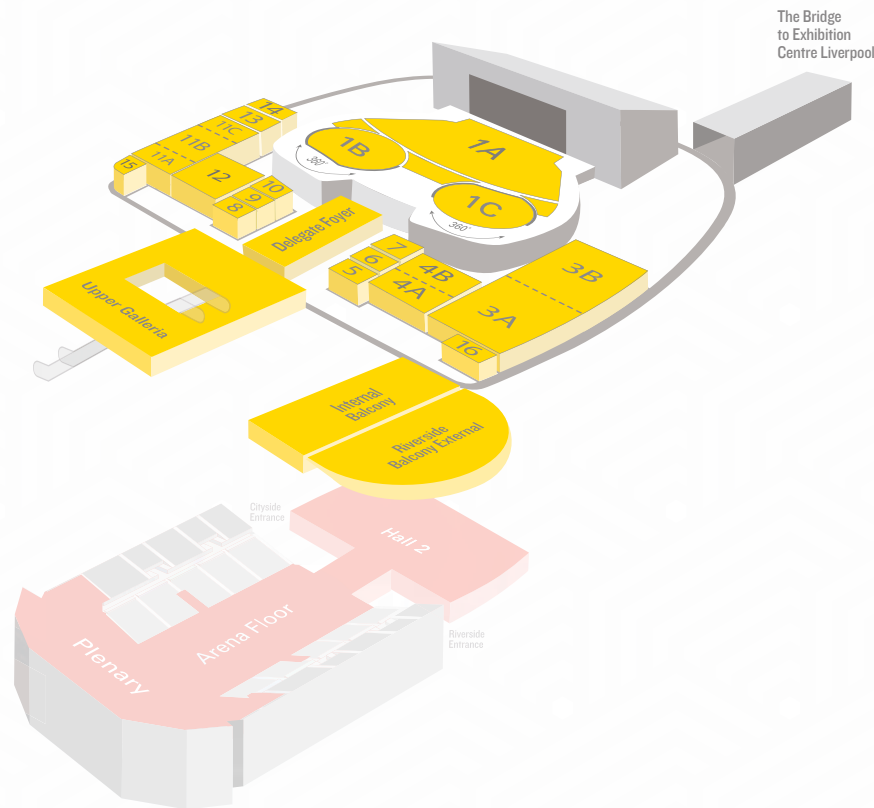
With panoramic views across Liverpool's world famous waterfront and room for up to 120 guests, its a contemporary space for entertaining clients, delegates and sponsors in style, without having to leave the event campus.



# UPPER LEVEL

The upper level of ACC Liverpool is purpose built for conferences, whether you want spectacular views across the Mersey as your backdrop or a blank canvas to make your own.

The auditorium is central to the venue, with its 1,350 theatre-style seats, impressive stage, and even more impressive revolving drums. These two areas can be used for 247-seat lectures, or turned and closed off to make the auditorium smaller. It's a brilliantly flexible yet effective facility.



## Main Auditorium A+B+C tiered seats

1 (A+B+C)	n/a	1,350	-	-	-	-
-----------	-----	-------	---	---	---	---

## Core Auditorium 850 tiered seats

1A	n/a	850	-	-	-	-
----	-----	-----	---	---	---	---

## Revolving 250 tiered seats

1B	n/a	247	-	-	-	-
1C	n/a	247	-	-	-	-

Room	Dimensions (m)	Size (m <sup>2</sup> )	Theatre Style	Banquet	Cabaret	Classroom	Boardroom
------	----------------	------------------------	---------------	---------	---------	-----------	-----------

## Conference Centre Meeting Rooms

3 (A+B)	38.04 x 12.43	463	613	270	222	311	102
3A	19.25 x 12.43	243	299	120	102	147	60
3B	18.79 x 12.43	220	264	100	102	125	60
4 (A+B)	14.19 x 12.36	173	190	80	60	90	48
4A	12.36 x 7.29	87	90	-	24	45	36
4B	12.36 x 6.90	86	90	-	24	45	30
5	5.66 x 4.54	25	25	-	-	15	12
6	5.66 x 4.65	26	25	-	-	15	12
7	5.66 x 6.60	34	32	-	-	14	18
8	5.66 x 4.54	25	25	-	-	15	12
9	5.66 x 4.65	26	25	-	-	15	12
10	5.66 x 6.60	34	32	-	-	14	18
11 (A+B+C)	26.17 x 12.98	332	418	170	150	209	78
11A	12.98 x 7.25	92	95	-	24	48	36
11B	12.98 x 12.00	154	148	70	60	72	48
11C	12.98 x 6.92	86	95	-	24	45	36
12	14.19 x 12.17	172	190	80	60	90	48
13	10.08 x 6.28	58	63	-	-	31	24
14	9.02 x 4.95	44	50	-	-	22	18
15	5.55 x 4.63	25	16	-	-	14	12
16	5.41 x 2.74	14	15	-	-	-	6

- All conference centre meeting rooms provide 4 metres of clear height
- The dimensions shown are of the room at its widest point. Please be aware some rooms may vary as they have curved corners
- Cabaret based on 6 per table. Alternative configurations are available upon request.



Riverside Balcony



Auditorium



Banquet in Room 3





Tiered seating Exhibition Centre



Banquet Set-up



Exhibition Set-up

# EXHIBITION CENTRE

Creating the right visual look for your event can play a big part in its success. At Exhibition Centre Liverpool, part of the Liverpool event campus, we have 8,100m<sup>2</sup> of versatile space that can be transformed for your next big brand event.

If inspirational settings will boost your event, you're in luck because the terrace suite of meeting rooms look out onto breath-taking views across Liverpool's outstanding world heritage waterfront. Use eight flexible meeting rooms independently, or combine to provide capacities for 10-210 with audio visual packages and Wi-Fi included.

Hotel accommodation is provided by 658 on-site rooms with 216 of these in the integrated, four-star Pullman Liverpool.

Hall	Dimensions (m)	Size (m <sup>2</sup> )	Theatre Style	Banquet
(A+B+C)	60 x 135	8,100	6,000	3,270
(B+C)	60 x 90	5,400	4,800	1,900
Hall A	60 x 45	2,700	2,400	N/A
Hall B	60 x 45	2,700	2,400	1,100
Hall C	60 x 45	2,700	2,400	1,100

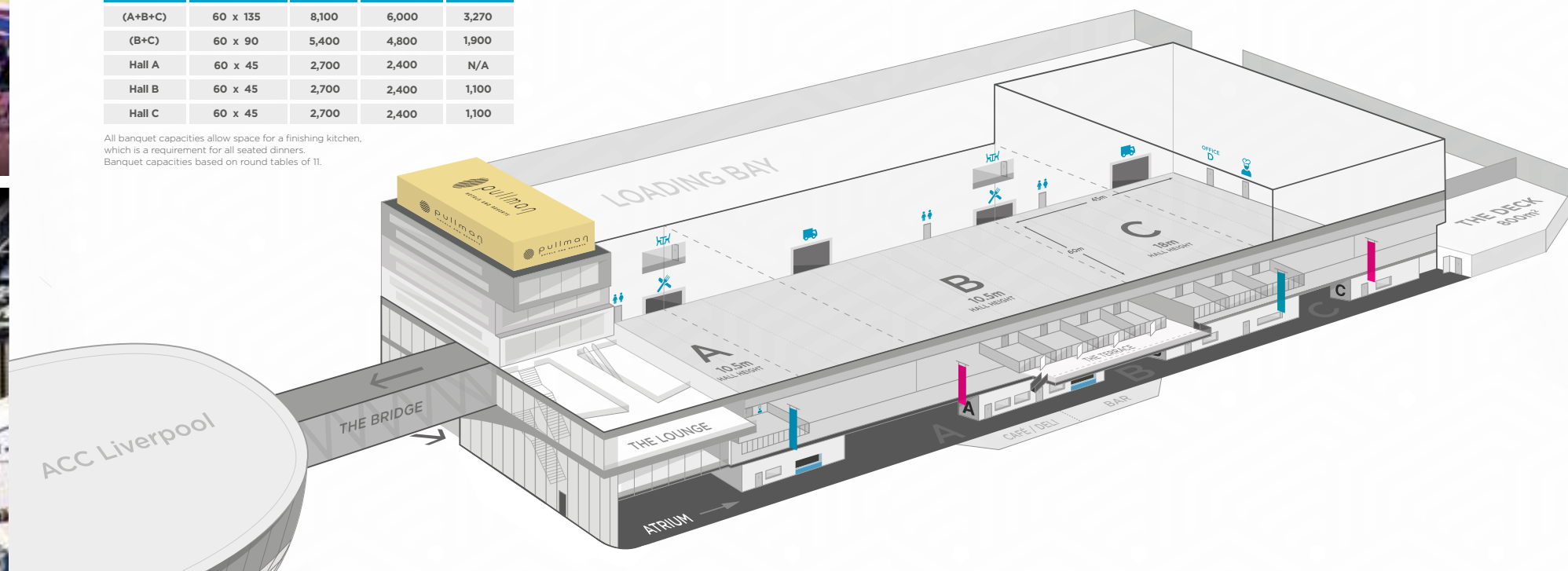
All banquet capacities allow space for a finishing kitchen, which is a requirement for all seated dinners. Banquet capacities based on round tables of 11.

Meeting Room	Dimensions (m)	Size (m <sup>2</sup> )	Theatre Style	Banquet*	Classroom	Boardroom
17	14.27 x 4.44	65	42	-	21	24
18	7.08 x 4.91	34	30	-	12	18
19	7.10 x 5.02	35	30	-	12	18
20	7.10 x 4.64	32	25	-	11	18
21	7.10 x 4.66	29	22	-	10	18
22	17.88 x 4.69	82	73	-	37	48
23	17.90 x 4.69	82	73	-	37	48
24	8.88 x 4.08	34	28	-	12	18
18 + 19	14.18 x 4.91	70	80	-	39	42
19 + 20	14.20 x 4.64	66	61	-	37	42
20 + 21	14.20 x 4.64	66	59	-	30	42
22 + 23	35.78 x 4.69	168	-	90	-	-
23 + 24	21.98 x 4.08	90	-	-	-	-
18 + 19 + 20	21.28 x 4.64	99	110	60	53	-
19 + 20 + 21	21.30 x 4.64	99	107	60	43	-
18 + 19 + 20 + 21	28.38 x 4.64	132	-	80	70	-

TERRACE - WITH MEETING ROOMS 18-21 IN PLACE			
Theatre	Banquet	Cabaret	Size (m <sup>2</sup> )
120	80	66	224

TERRACE - CLEAR OF MEETING ROOMS			
Theatre	Banquet	Cabaret	Size (m <sup>2</sup> )
210	200	126	354

\* For Banquet style layout please note that these capacities do not include a stage or dance floor



# TAKING CARE OF BUSINESS

When you bring your event to ACC Liverpool, you'll receive a warm welcome from our world-class network of support services in the city. Together, we ensure that your event is well-connected, 100% supported and guaranteed to keep your delegates talking and wanting to return.

## AT YOUR SERVICE

If you're looking for that special 'wow'

.....  
.....  
.....



## LIVERPOOL CONVENTION BUREAU

.....  
Convention Bureau works in partnership with ACC Liverpool's expert team to  
.....



## CATERING

.....  
.....  
.....



## BESPOKE PRODUCTION

.....  
.....  
.....

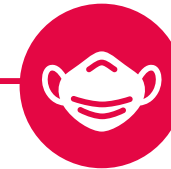


## FREE WI-FI

.....  
.....



acc  
Liverpool



## COVID EXCELLENCE PLEDGE

.....  
.....  
.....



## GUEST RELATIONS

.....  
.....



# MIX BUSINESS WITH LEISURE

There has to be some creature comforts when you're working away from home, and that's where our on-site headquarters hotel, the Pullman Liverpool, comes into its own.

Conveniently integrated into the Liverpool event campus, this contemporary hotel offers 216 comfortable rooms and suites, and a top-notch menu to suit every taste thanks to delicious dishes in the on-site restaurant.

If you enjoy working in good looking, stylish interiors, now's your chance. Pullman Liverpool's range of flexible meeting rooms and event spaces come with floor-to-ceiling windows offering panoramic views of the Royal Albert Dock – talk about jaw-dropping! And if you need to plan informal catch-ups, the hotel's chilled out connectivity lounge or friendly bar offer excellent alternatives.

At Pullman Liverpool, mixing business with leisure has never been so easy.





# PERFECT PARTNERSHIP

Together we are brilliant. Bring your event to ACC Liverpool and receive a warm welcome into our world-class network. Experts in all things Liverpool, our destination team can provide the contacts, ideas and know-how to make your visit to Liverpool a success.

Our joined-up approach provides a winning formula for organisers who can depend on Liverpool's support network.

The venue's innovative and intuitive in-house delivery team are your go-to collaborators who will be with you every step of the way.

Throw into the mix the support services of destination Liverpool and your event is well connected in every sense. From accommodation bookings to social programmes and entertainment ideas, let's connect and show you the possibilities.





# WELL-CONNECTED EVENTS



ACC Liverpool, Kings Dock, Liverpool Waterfront L3 4FP

**T:** +44 (0) 151 703 7294 **E:** [sales@accliverpool.com](mailto:sales@accliverpool.com)

[www.accliverpool.com](http://www.accliverpool.com)

 [@ACCLiverpool](https://twitter.com/ACCLiverpool)

 Search ACC Liverpool

Part of The **acc** Liverpool Group